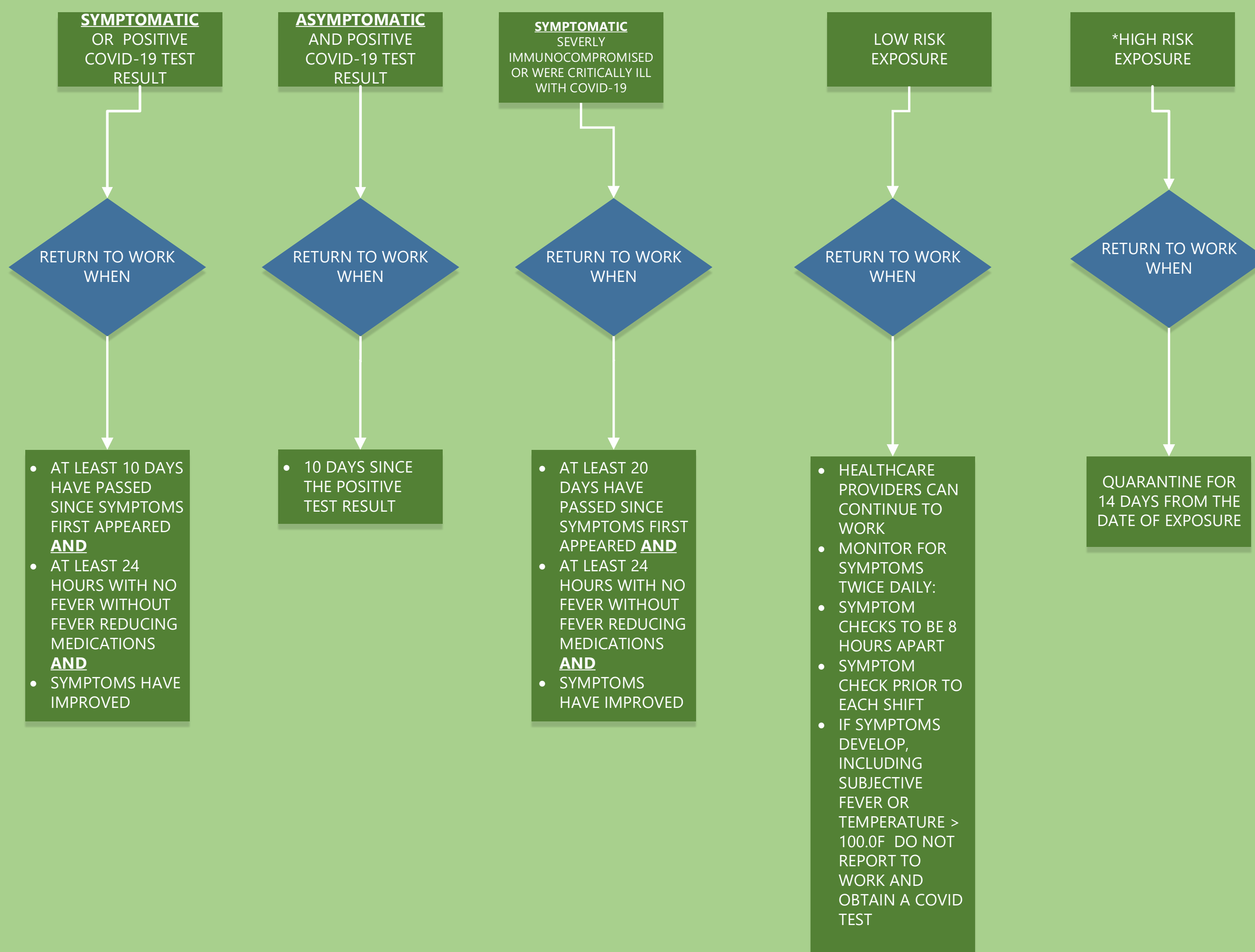


## COVID-19 RETURN TO WORK FOR HEALTHCARE PROVIDERS

### SYMPTOMATIC OR POSITIVE COVID-19 TEST RESULT

### EXPOSURE TO A COVID-19 POSITIVE INDIVIDUAL



#### \*HIGH RISK EXPOSURE:

1. AN UNMASKED PROVIDER HAVING PROLONGED CLOSE CONTACT WITH AN UNMASKED PATIENT WITH COVID-19
  - A. CLOSE CONTACT IS DEFINED AS LESS THAN SIX FEET DISTANCE FOR 15 MINUTES
  - B. THIS INCLUDES BRIEF ENCOUNTERS TOTALING 15 MINUTES IN A 24 HOUR PERIOD
2. A PROVIDER PRESENT FOR AN AEROSOL GENERATING PROCEDURE WITHOUT WEARING APPROPRIATE PPE
  - A. AEROSOL GENERATING PROCEDURES TO INCLUDE: CPR, INTUBATION, EXTUBATION, BRONCHOSCOPY, NEBULIZER THERAPY, AND SPUTUM INDUCTION

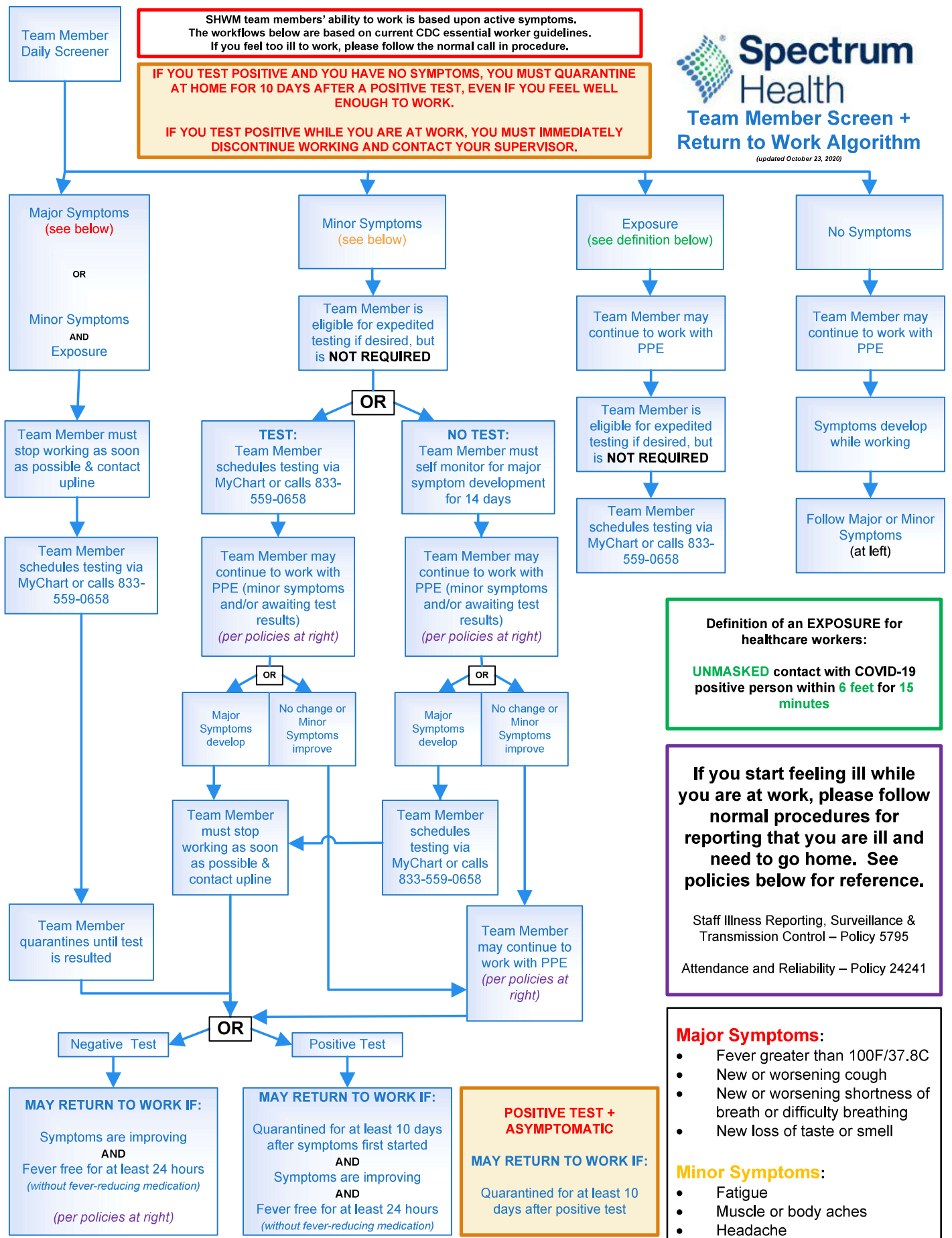
#### ADDITIONAL PRECAUTIONS FOR HEALTHCARE WORKERS AFTER A HIGH-RISK EXPOSURE:

- A FACEMASK FOR SOURCE CONTROL DOES NOT REPLACE THE NEED TO WEAR AN N95 OR HIGHER LEVEL RESPIRATOR WHEN INDICATED INCLUDING FOR THE CARE OF PATIENTS WITH SUSPECTED OR CONFIRMED COVID-19.
- N95 RESPIRATORS WITH A CONTROL VALVE MIGHT NOT PROVIDE SOURCE CONTROL

**SHWM team members' ability to work is based upon active symptoms. The workflows below are based on current CDC essential worker guidelines. If you feel too ill to work, please follow the normal call in procedure.**

**IF YOU TEST POSITIVE AND YOU HAVE NO SYMPTOMS, YOU MUST QUARANTINE AT HOME FOR 10 DAYS AFTER A POSITIVE TEST, EVEN IF YOU FEEL WELL ENOUGH TO WORK.**

**IF YOU TEST POSITIVE WHILE YOU ARE AT WORK, YOU MUST IMMEDIATELY DISCONTINUE WORKING AND CONTACT YOUR SUPERVISOR.**



**Definition of an EXPOSURE for healthcare workers:**  
**UNMASKED** contact with COVID-19 positive person within **6 feet** for **15 minutes**

**If you start feeling ill while you are at work, please follow normal procedures for reporting that you are ill and need to go home. See policies below for reference.**  
Staff Illness Reporting, Surveillance & Transmission Control – Policy 5795  
Attendance and Reliability – Policy 24241

- Major Symptoms:**
- Fever greater than 100F/37.8C
  - New or worsening cough
  - New or worsening shortness of breath or difficulty breathing
  - New loss of taste or smell
- Minor Symptoms:**
- Fatigue
  - Muscle or body aches
  - Headache
  - Sore throat
  - Congestion or runny nose
  - Nausea or vomiting
  - Diarrhea

Spectrum Health will not require a team member to report to any Spectrum Health facility where any other team member is present for the reasons and during the duration defined in MDHHS Gathering Prohibition and Face Covering Order or other applicable law or order.